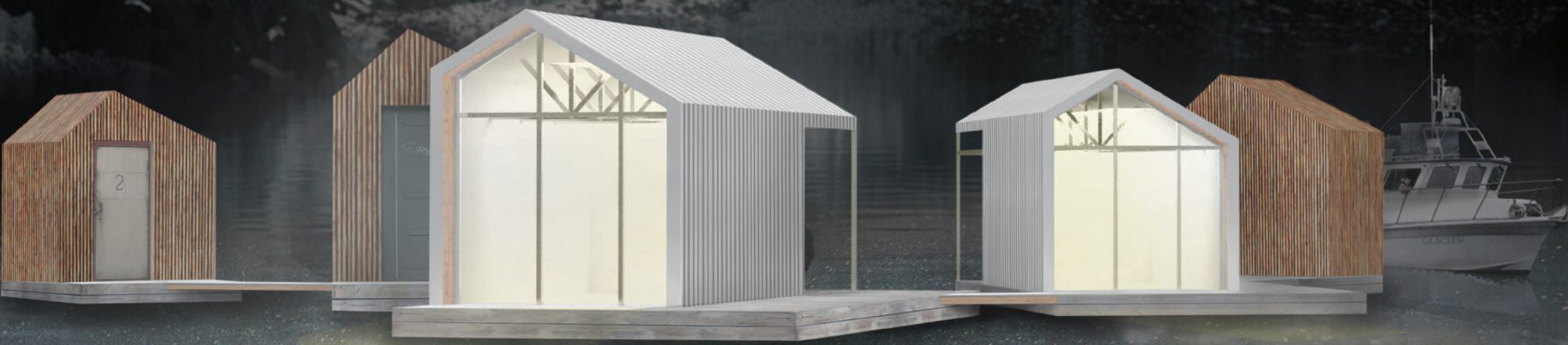


THE OFFSHORE PROJECT



NUNAVIK COMPOSES THE NORTHERN THIRD OF THE PROVINCE OF QUEBEC, CANADA WITH FOURTEEN VILLAGES SITUATED ALONG THE HUDSON BAY AND THE HUDSON STRAIT. NUNAVIK IS HOME TO MORE THAN 12,000 INDIVIDUALS WITH 90% BEING INUIT. UP UNTIL THE 1950S AND 60S, INUIT PEOPLES MAINTAINED A NOMADIC LIFESTYLE THAT WAS INFLUENCED BY THE FISHING AND HUNTING OPPORTUNITIES ACROSS THE LAND. ESSENTIALLY, MOST INUIT WOULD MIGRATE TO WHEREVER THE FOOD WAS. TODAY, MANY INUIT STILL DEPEND ON SUCH MOVEMENT FOR SURVIVAL, BUT UNFORTUNATELY, THEIR CURRENT ESTABLISHMENTS OF FIXED HOMES DO NOT SUPPORT IT.

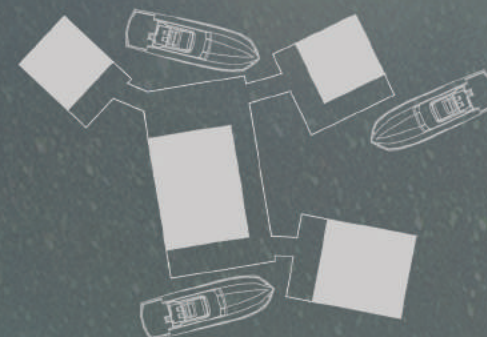
THE OFFSHORE PROJECT IS A RESPONSE TO THIS ISSUE AND IS A HOPEFUL SOLUTION TO BRING THE NOMADIC LIFESTYLE BACK TO NUNAVIK'S ARCHITECTURE.

THE OFFSHORE PROJECT IS QUITE SIMPLY A FLOATING CABIN MEANT TO ENGAGE ONE OF THE MOST TRADITIONAL ACTIVITIES OF THE INUIT: FISHING. A STANDARD CABIN WOULD FEATURE A MINIMUM OF TWO BEDS, ONE KITCHEN AND A FISH PREP STATION, ESSENTIALLY BECOMING A HOME ON THE WATER MEANT FOR SHORT OR LONG TERM FISHING TRIPS. THE CABINS CAN EITHER STAND ALONE AS AN INDEPENDENT STRUCTURE OR LINK TOGETHER TO CREATE A MODULAR SYSTEM. A MODULAR SYSTEM WOULD ALLOW THE DESIGN TO ADAPT TO THE CHANGING NEEDS OF THE INUIT, MEANING DURING PEAK-SEASONS, THEY MAY LINK TOGETHER SEVERAL HUTS WITH DIFFERENT FUNCTIONS (HOUSING, EATING AND STORAGE). THIS TRANSFORMS THE INDIVIDUAL HUTS INTO LARGE HUBS WHICH BECOME TEMPORARY COMMUNITIES ACROSS THE WATER. THE MOST SIGNIFICANT FEATURE THIS DESIGN PRESENTS HOWEVER, IS ITS ABILITY TO TRANSPORT FROM ONE PLACE TO THE NEXT AS THE FISHING SEASON CHANGES. THIS ALLOWS INUIT TO FOLLOW THE GAME AND TAKE BACK THEIR NOMADIC LIFESTYLE.



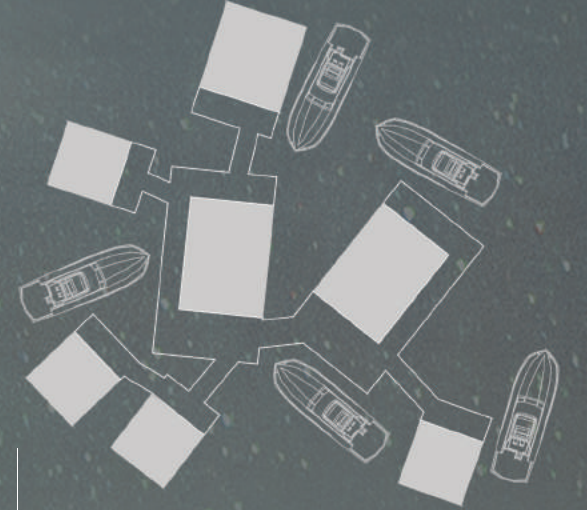
2 BEDS
1 KITCHEN
1 FISH PREP STATION
1 STORAGE

OFF-SEASON



4 BEDS
1 KITCHEN
1 FISH PREP STATION
2 STORAGE

REGULAR USE



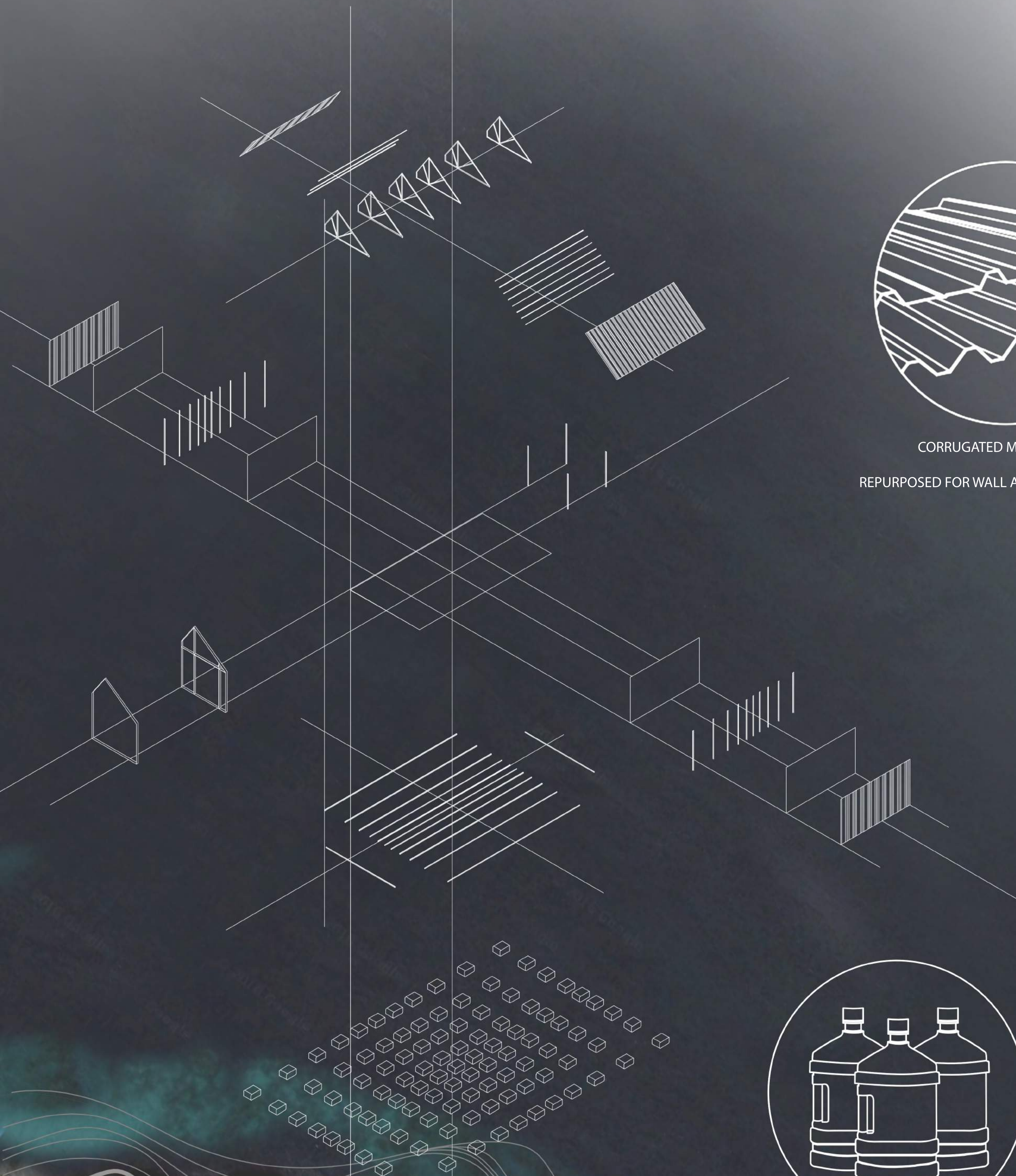
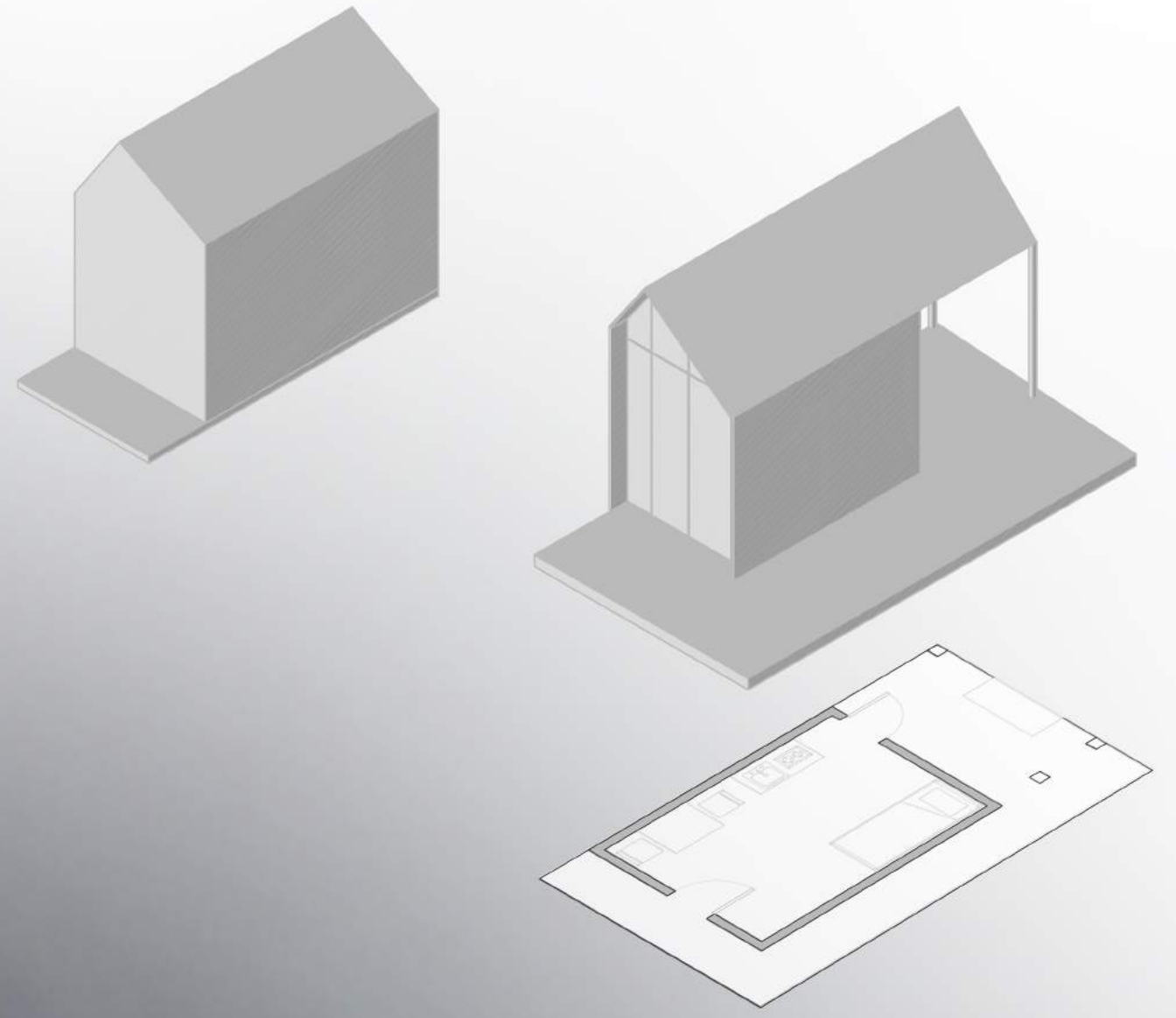
6 BEDS
2 KITCHEN
2 FISH PREP STATION
4 STORAGE

LARGE HUB

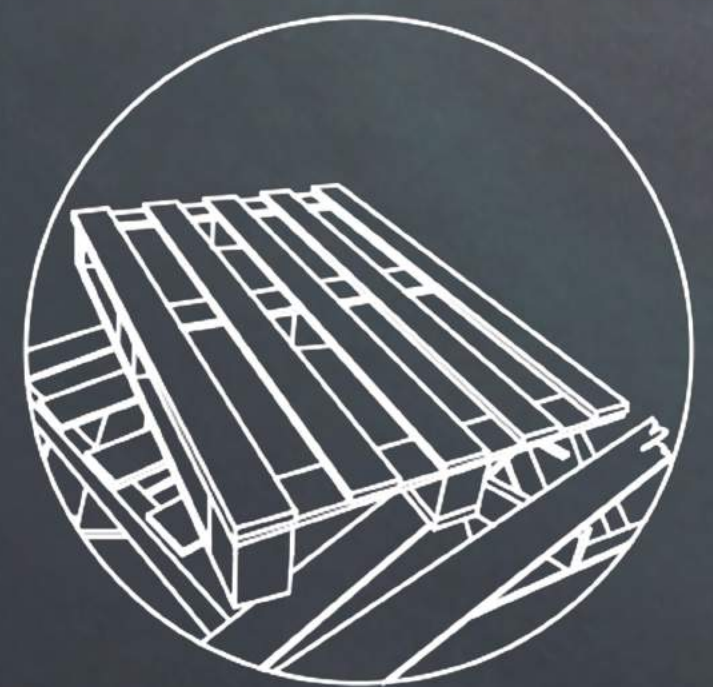


ONTARIO

THE DISCONNECT BETWEEN ARCHITECTURE AND CULTURE IS NOT ONLY APPARENT IN THE HOMES OF NUNAVIK BUT ALSO IN THE LAND THEY ARE SITUATED ON. THE PASSAGeways BETWEEN HOMES ARE LITTERED WITH MATERIALS THAT HAVE EITHER BEEN ABANDONED OR HAVE NO USE. IN THE EFFORTS TO BE ECONOMICAL AND CLEAN UP THE LAND, THE DESIGN OF THE OFFSHORE PROJECT SEEKS TO REPURPOSE MATERIALS SUCH AS: SHIPPING CONTAINERS, METAL CANOES, PLYWOOD CRATES, PLASTIC WATER RECEPTACLES, SCRAP LUMBER AND CORRUGATED METAL SHEETS.



CORRUGATED METAL SHEETS
REPURPOSED FOR WALL AND ROOF ASSEMBLIES



SCRAP LUMBER AND PLYWOOD CRATES
REPURPOSED AS STUDS AND FLOOR JOISTS



PLASTIC WATER RECEPTACLES
REPURPOSED FOR BUOYANCY

